

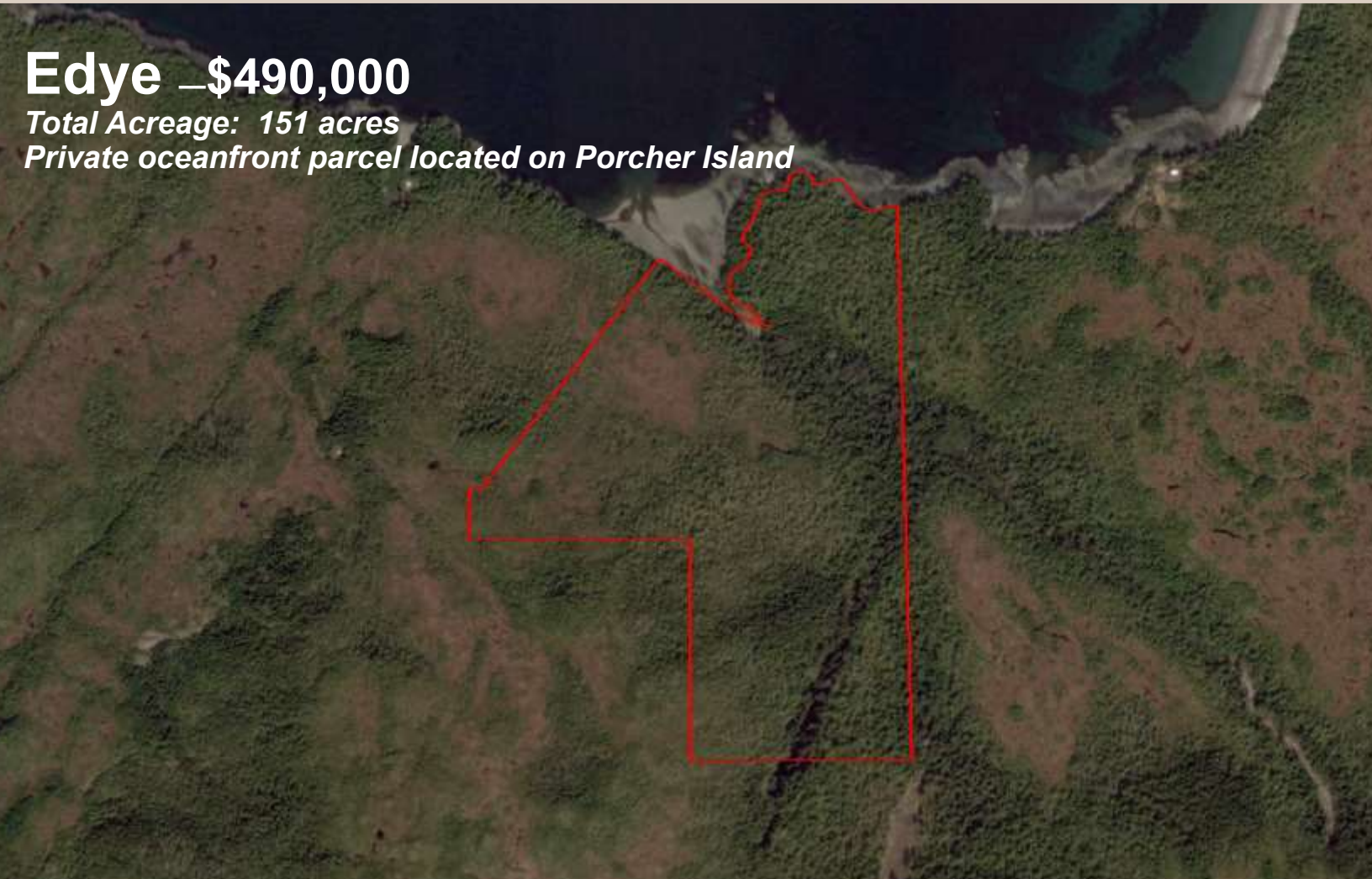


# Invest in Waterfront Property

**Edge –\$490,000**

*Total Acreage: 151 acres*

*Private oceanfront parcel located on Porcher Island*



**Private Oceanfront Trophy Property**

**[www.niho.com](http://www.niho.com)**

**(604) 606-7900**

# Edge

## **Private Oceanfront Trophy Property! Secluded 151 Acres—Best Salmon Fishing on the North Coast Porcher Island, Northern British Columbia**

A gem of an oceanfront property, this 151 acre property includes over 2800 ft of oceanfront in a sheltered bay. Located only minutes away from “Money Point” due to the fantastic fishing for Pacific salmon and huge halibut in its surrounding waters. Chinook salmon, up to 80 lbs., is not uncommon.

**Price:** \$490,000

**Size:** 151 Acres

**Area:** North Coast



**Contact us: [sales@niho.com](mailto:sales@niho.com) or 604-606-7900**

# Edge

## Secluded Oceanfront Trophy Property!

This is one of only a few oceanfront properties on the island that has excellent well-sheltered moorage in Useless Bay on the northwest corner of Porcher Island. There is approximately 2844 ft of oceanfront, with a good sandy beach surrounding the bay, with a creek traversing the property. At high tide it is possible to come right into the creek mouth with an airplane or small boat. A majority of the central and western portions of the property are fairly open, with scattered pine and cedar throughout, although there are some wet areas. There are some remains of an old wooden flume, which carried water to a nearby mine. The property slopes downward, with steep rock bluffs overlooking the creek in the southern part of the property.

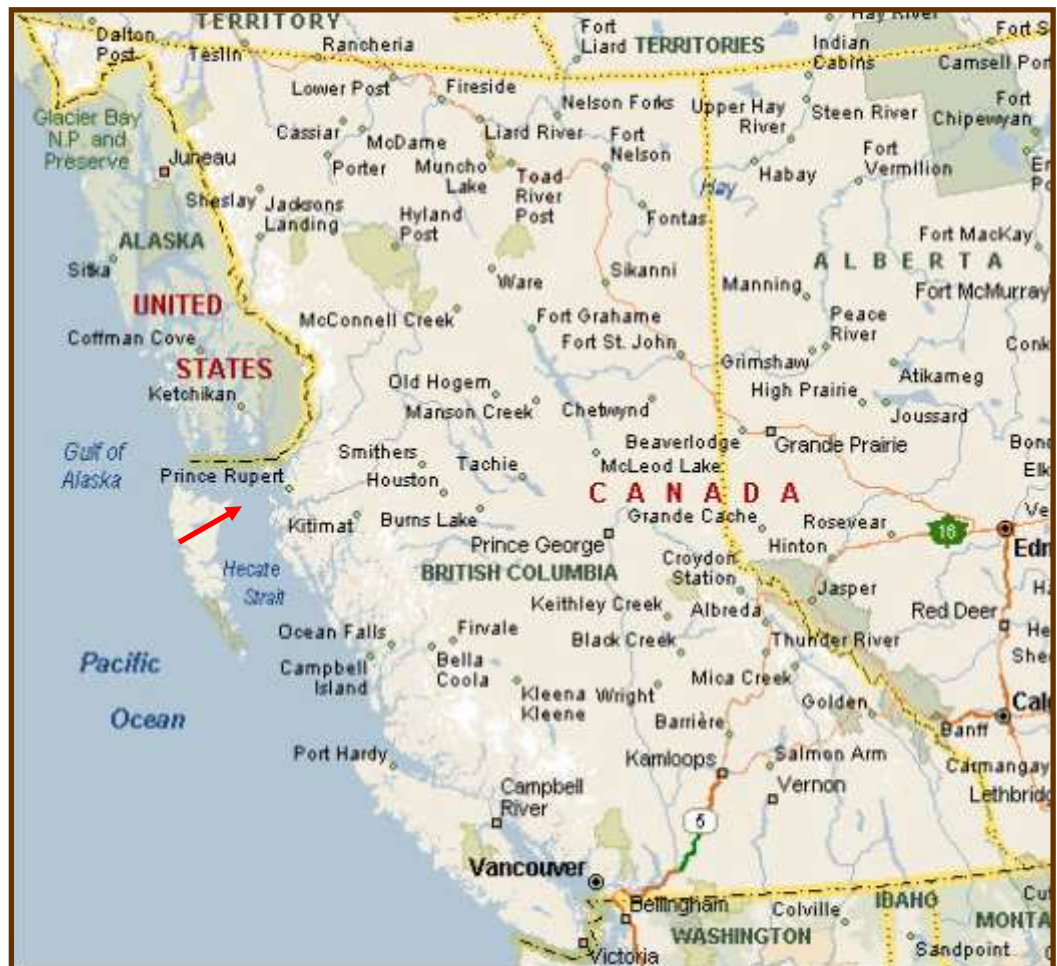
### Location:

This property is located 15 miles (24 kms) south of Prince Rupert on the northern coast of Porcher Island.

Porcher Island is a large island just south of Prince Rupert, which is approx. 460 miles (740 km), as the crow flies, north of Vancouver.

### Access:

To reach the property you will require to travel either by **boat** from Prince Rupert down the telegraph passage and then along the north end of Porcher Island through Malice Passage to Useless Bay, or by **float plane** which is a 15 minute trip from Prince Rupert.



Contact us: [sales@niho.com](mailto:sales@niho.com) or 604-606-7900

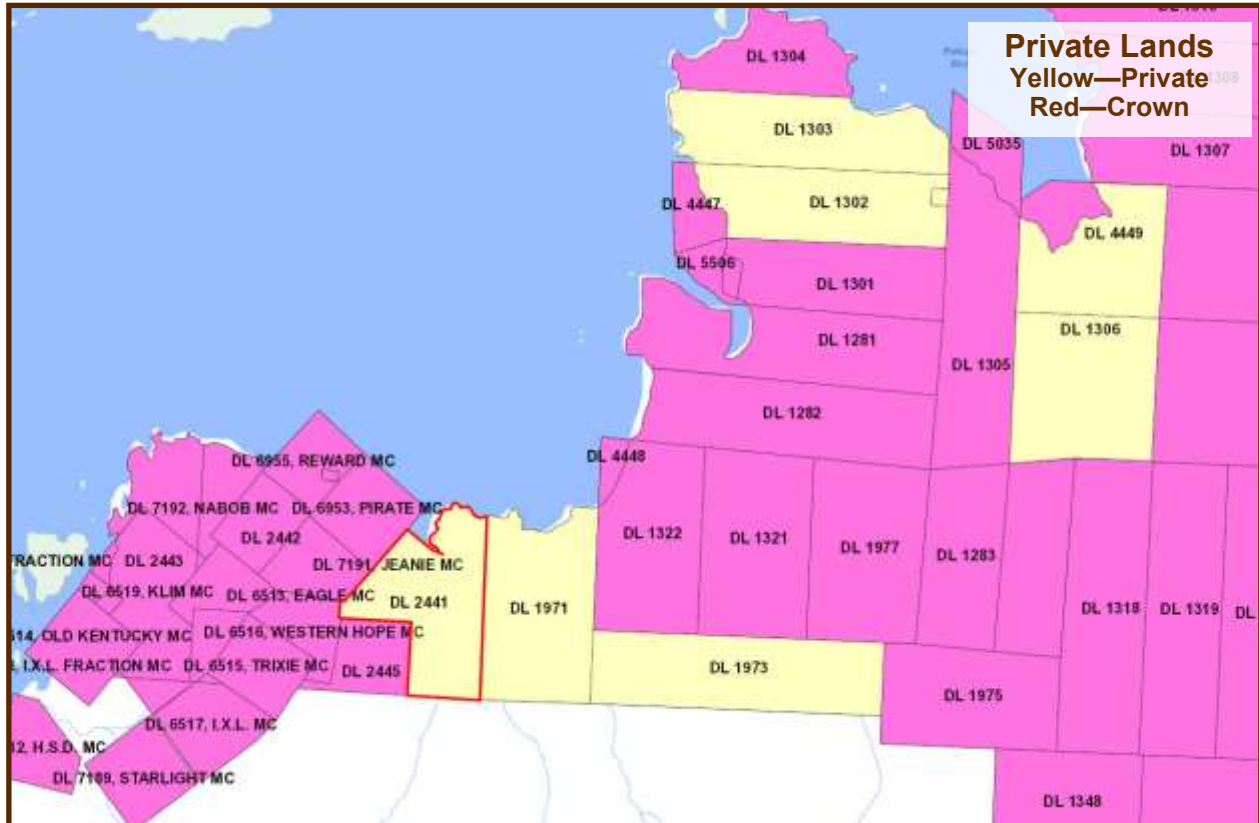


# Edge

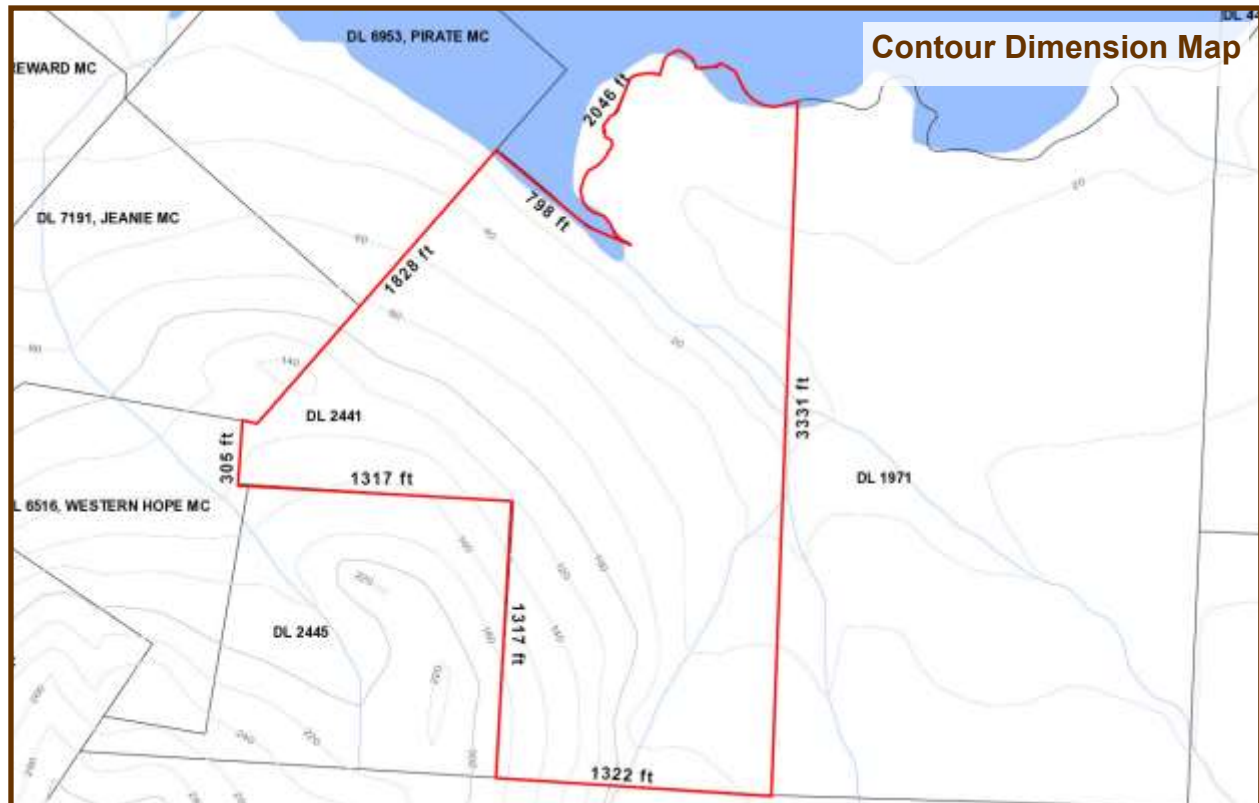


Contact us: [sales@niho.com](mailto:sales@niho.com) or 604-606-7900

# Edge



Private Lands  
Yellow—Private  
Red—Crown

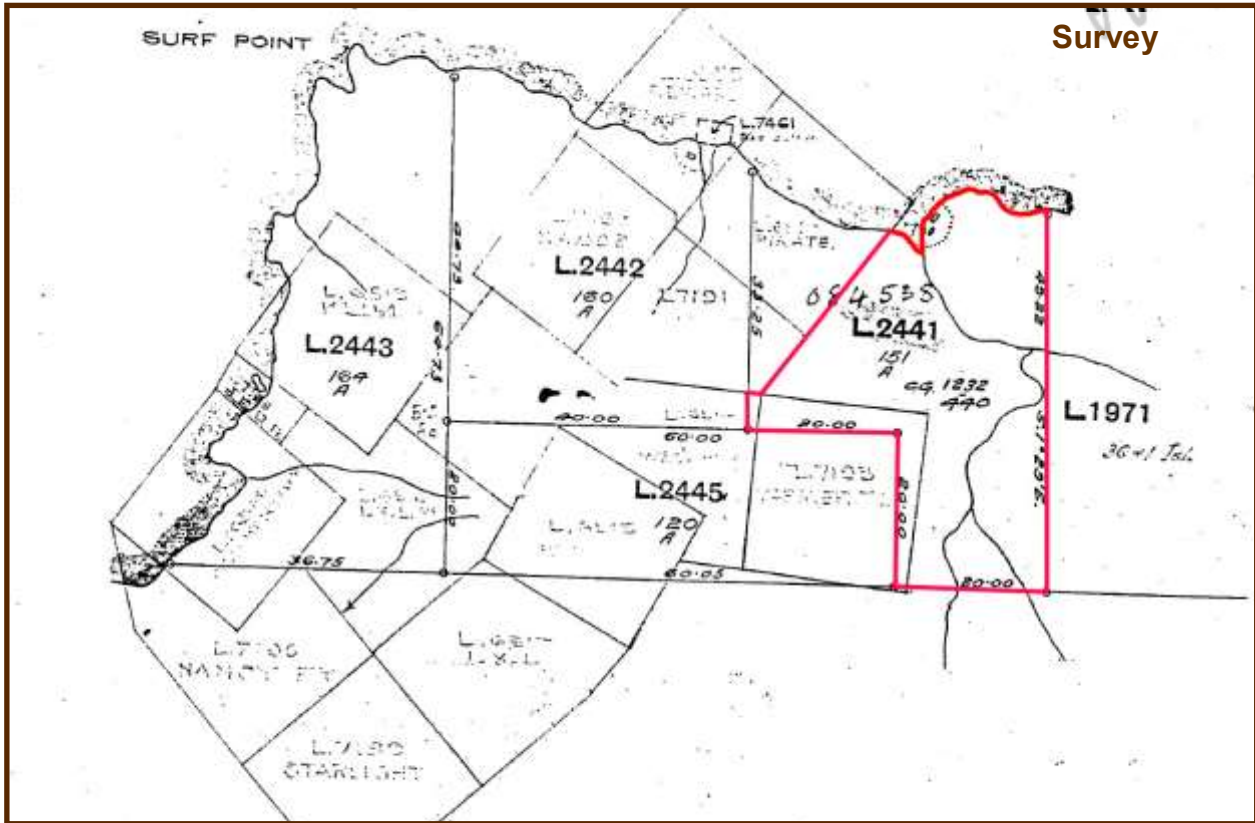


Contour Dimension Map

Contact us: [sales@niho.com](mailto:sales@niho.com) or 604-606-7900



# Edge



Contact us: [sales@niho.com](mailto:sales@niho.com) or 604-606-7900

# Edye

## Recreation

Fishermen come from near and far to fish in this area. Goble Point and Edye Pass are referred to by local fishermen as “Money Point” due to the fantastic fishing for Pacific salmon and huge halibut in its surrounding waters. Chinook salmon, up to 80 lbs., is not uncommon.

The creek running through the property has trout and coho salmon at the bottom of the stream, with runs of pink salmon expected in the inter-tidal areas. Two nearby creeks, Big Useless Creek and Little Useless Creek, have runs of pink coho and chum salmon. Useless Bay contains a beautiful small white sandy-beached cove that has lots of dungeness crabs, clams and shellfish. Oona River, a fishing village, has charter boats available for both day and overnight trips.

The area is popular for kayaking and boating with miles of unpopulated sandy beaches. Porcher Island is home to deer and a number of small mammals. There is also a very wide range of birds, and numerous eagles can be seen throughout the island. We counted 38 eagles in one tree by a sea lion carcass.



Contact us: [sales@niho.com](mailto:sales@niho.com) or 604-606-7900



# Edge

## Area Data:

**Porcher Island** is a large coastal island approximately 16 miles (25 kilometres) south of Prince Rupert and 3 miles (5 kms) from the mainland. The shores of this island are generally flat with good beaches, while the interior of the island has several hills and Egeria Mountain is the tallest reaching to 2,915 feet. There are three small communities on the island - Hunts Inlet, Oona River (the largest) and the village of Porcher Island, and these settlements are mainly dependent on the fishing industry. Besides the three communities, there are a number of year-round residences and some seasonal residences throughout this island.

**Prince Rupert** is a city with a population of 12,508 people making it the largest community on the northwest coast. North America's closest port to Asia, Prince Rupert has excellent investment potential, with projects including several prospective LNG terminals, and North America's first dedicated ship to rail container terminal. The city also boasts a significant deep water shipping harbor and rail terminus for Canadian exports destined for overseas markets, and is home to a large fishing fleet.

Tourism is a major business in Prince Rupert with over a quarter of a million visitors passing through each year. Deluxe, explorer-class cruise ships base their summer operations in Prince Rupert and visitors congregate here to begin exotic wilderness cruises in enchanting northern passages to Alaska or the Queen Charlotte Islands.



B.C. Ferries sails the Inside Passage year-round, between Prince Rupert and Port Hardy and also from Prince Rupert to Skidegate on the Queen Charlotte Islands.

Transportation facilities are comprehensive – CNR and Via Rail offer rail service, there are two airports, marine highways, tug services and rail barge services.

**Haida Gwaii**, also known as the Queen Charlotte Islands, located to the west of Porcher, often called the "Canadian Galapagos", face Japan across the vast open Pacific Ocean. There are many out-of-the-ordinary natural attractions on these islands - bald eagles, seabirds, blacktail deer and seals - and one of the world's finest collections of native Indian argillite totem poles at the Skidegate Museum.

Graham Island is the largest, most accessible, and most populated of Haida Gwaii. The average actual rainfall is higher than the average actual rainfall at Vancouver International Airport, but less than that of North Vancouver. The isolation and climate make the islands distinctly different from the mainland and permit unique subspecies to thrive here. Luxurious rain forests, shell scattered shorelines and sandy beaches provide superlative wilderness adventures.

**Contact us: [sales@niho.com](mailto:sales@niho.com) or 604-606-7900**



# Edye

## History

Porcher Island was named after Commander E.A. Porcher, who was on this coast in 1865-68 commanding H.M.S. Sparrowhawk. When the development of the port city of Prince Rupert was announced, people came from all over the continent to settle; but not all of them lived in the city itself and by 1907 there were dozens of homesteaders on the islands off the mouth of the Skeena River. Small communities sprang up, many of them on Porcher Island. Porcher was first settled by mostly Swedish and Norwegian pioneers who grew bountiful crops of fruit and vegetables and raised sheep, due to the islands temperate climate.

Humpback Bay is the site of the abandoned Porcher Island Cannery, erected in 1929; however, it was not an auspicious year to begin a cannery, being the beginning of the Great Depression. Four years later the plant was taken over by the Canadian Fishing Company but used only as a fishing station, that is, a supply depot for local fishermen to buy and sell fish and store their nets. Today the site is privately owned, and some of the cannery buildings still stand.

## Vegetation:

Cedar, Hemlock, Spruce, Balsam, Pine & Cypress

## Boundaries:

Surveyed by N.F. Townsend in September, 1908.

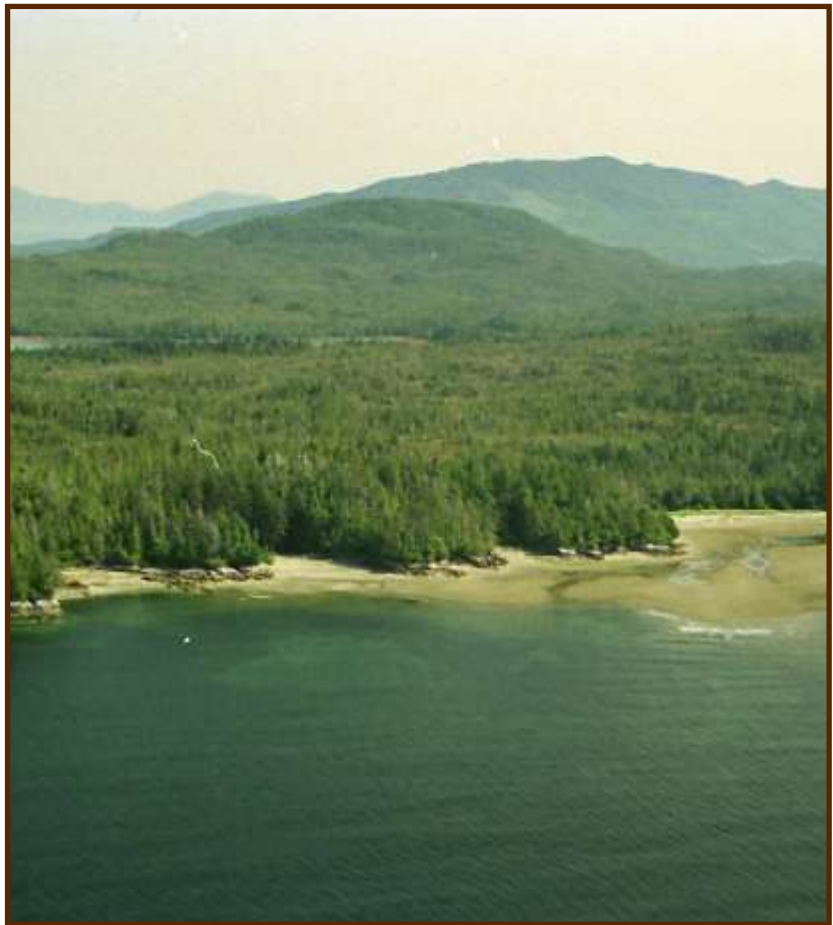
## Services & Zoning:

None

## Legal Description:

District Lot 2441, LD 14.  
PID: 015-179-737

**Taxes:** \$477.96 (2019)



Our property descriptions and geographical information are taken from the B. C. Assessment Authority, Land Titles Office, government maps and other sources.

While NIHO does not guarantee the information, we believe it to be accurate. All measurements are approximate. All prices are in Canadian funds and are subject to change without notice. NIHO reserves the right to remove any property from the market at any time, without notice.

**Contact us: [sales@niho.com](mailto:sales@niho.com) or 604-606-7900**

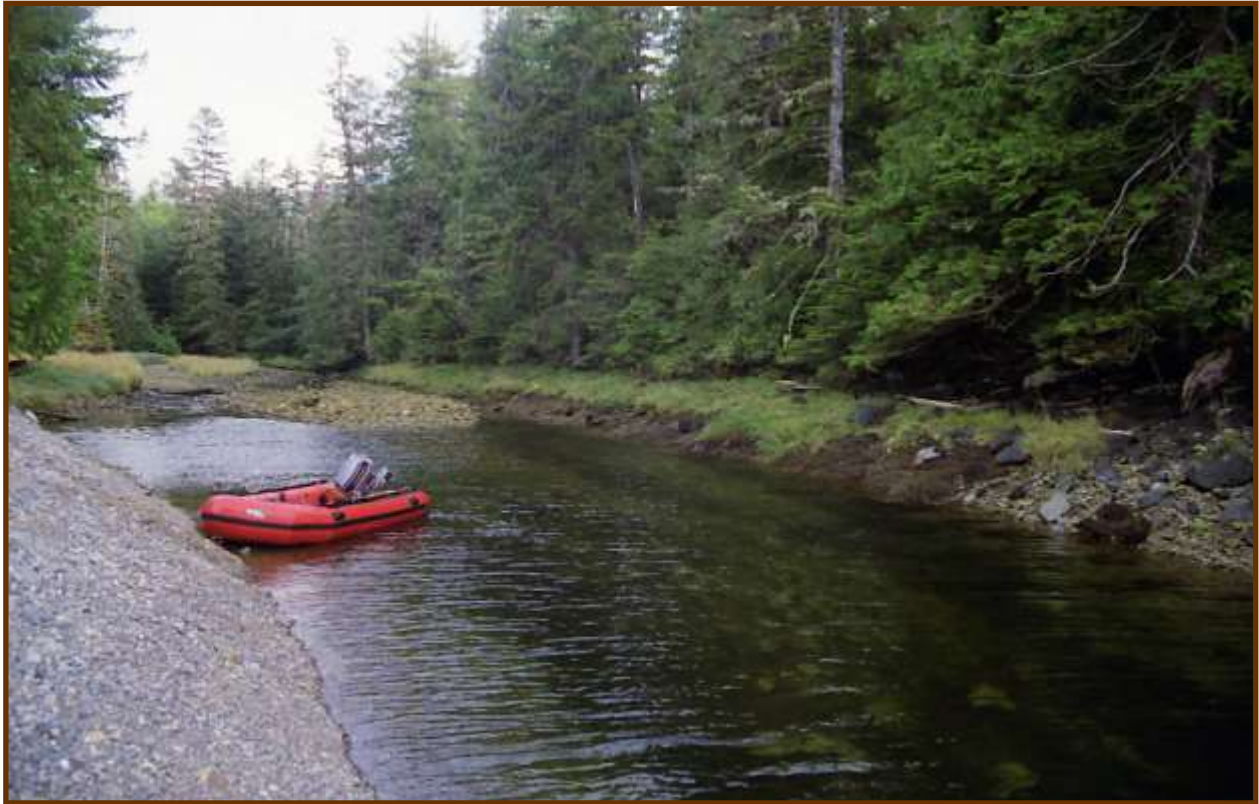
# Edge



Contact us: [sales@niho.com](mailto:sales@niho.com) or 604-606-7900



# Edge



Contact us: [sales@niho.com](mailto:sales@niho.com) or 604-606-7900





## **Edye**

*Porcher Island, British Columbia*



**NIHO Land & Cattle Company**

**200—313 Sixth Street, New Westminster, BC V3L 3A7**

**Phone: (604) 606-7900 Toll Free: 1-866-987 NIHO (6446)  
email: [sales@niho.com](mailto:sales@niho.com)**